

solar**edge**

S-Series Power Optimizers for Residential Installations

Smart.
Simple.
Safe.



/ Our Most Advanced Power Optimizers Yet

SolarEdge revolutionized the world of green energy with the invention of the DC optimized inverter solution, forever changing the way solar energy is harvested in PV systems. By connecting our Power Optimizers to each PV module, we enable maximum energy production while ensuring system safety. Now, we are leveling up again.

SolarEdge Sense Connect Technology raises the bar in PV safety

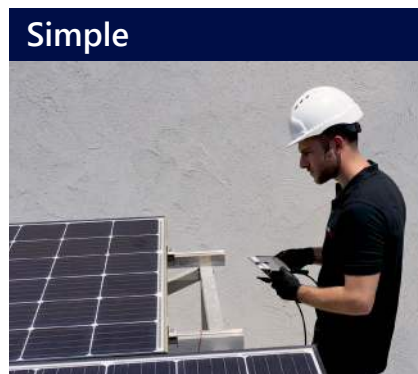
The S-Series Power Optimizers introduce patented SolarEdge Sense Connect technology that monitors the PV connections 24/7, detects any irregularities in PV connector temperature, and shuts the inverter off before an electric arc event can occur or connectors are damaged. Installers are notified and are directed to the exact event location, saving considerable maintenance time*. This extra level of protection complies with the most stringent arc detection standards.

What else is new in the S-Series

- / Connectors are positioned higher for easier installations and to minimize exposure to isolation faults
- / Each S-Series Power Optimizer is compatible with a wide range of modules, so fewer types are needed: easier project design, ordering and storage
- / Future-proofed to manage the technology requirements of today and tomorrow's high-powered PV modules like M10, G12 and bifacial modules



Smart
Pinpointed notification of thermal events for faster O&M and maximized system uptime.



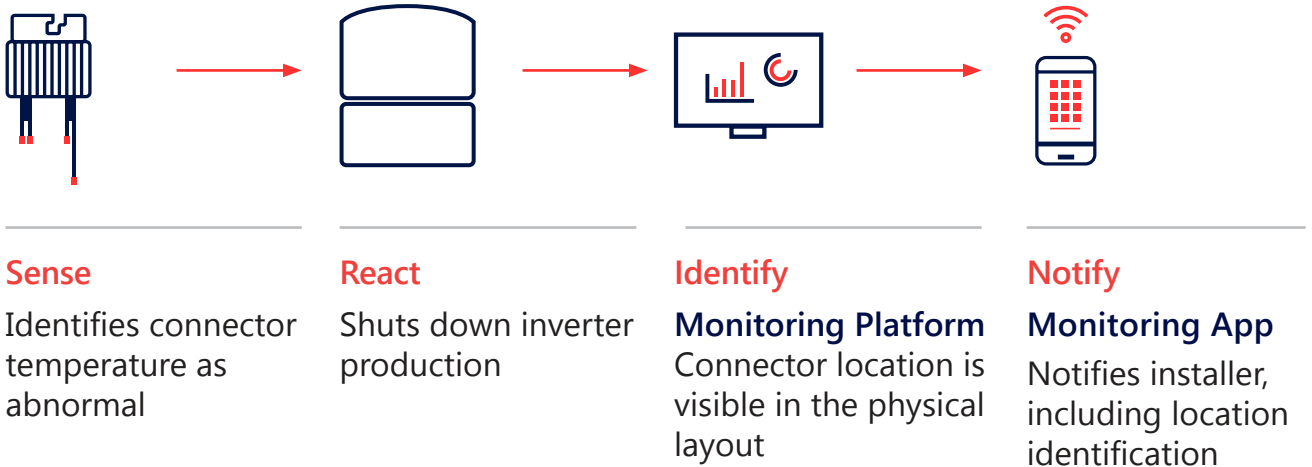
Simple
Easier cabling. Simple product inventory.



Safe
Groundbreaking technologies that safeguard against potential hazards occurring onsite.

*Available by firmware upgrade during 2022, check with your local SolarEdge representative for availability.

/ How Does SolarEdge Sense Connect Work?



/ Delivering Maximum Power Safely

The SolarEdge approach to safety is holistic. We integrate multiple safety features to truly protect people and property. Our installations meet the highest benchmarks of insurance companies and international safety regulations around the world. Here are our 3 pillars to safety:

A new level of electric arc protection

An unattended electric arc could develop into a fire. Our arc fault protection feature detects electric arcs and terminates them by automatically shutting off the inverter. SolarEdge Sense Connect identifies abnormal thermal events in the connector and prevents electric arcs from forming.

DC voltage that's safe to the touch

Our SafeDC™ technology built into every Power Optimizer ensures the PV system's DC voltage is automatically reduced to touch safe levels within 5 minutes during grid failures or when the inverter is shut down. With our optional **Rapid Shutdown** feature, installers can activate SafeDC™ at the flip of a switch, discharging the conductors to safe voltage levels within just 30 seconds.

Real-time module-level monitoring

A central component to our safety suite is our monitoring and alerts system, which gives installers a powerful tool to manage their solar installations. Automatic, pinpointed notifications on system issues help prevent potential safety risks while enabling rapid, remote troubleshooting and superior asset protection.

/ Exceptional Efficiency with S-Series

SolarEdge systems provide more of what your customers are looking for - power.

SolarEdge Power Optimizers significantly improve solar installation performance over time. Because they control and monitor the energy production of each individual module, Power Optimizers mitigate power losses caused by module mismatch (e.g., due to shading, soiling, module aging, etc.), support all roof types and maximize rooftop usage. They are highly efficient (99.5%), and together with individual MPPT per module, enable homeowners to generate more energy. As always, installers and homeowners benefit from real-time, module-level performance monitoring, accessible from anywhere with their SolarEdge monitoring apps.

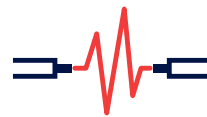
/ SolarEdge Sense Connect Offers Installers



Detection of potential thermal events



Onsite identification of faulty installation



Fast detection of faulty connection location



Automatic inverter shutdown

/ Benefits You Expect From SolarEdge

- / 25-year Power Optimizer warranty
- / Robust and reliable technology
- / Advanced safety built-in
- / Higher system energy production

About SolarEdge

SolarEdge is a global leader in smart energy technology. By deploying world-class engineering capabilities and a relentless focus on innovation, we create smart energy products and solutions that power our lives and drive future progress.

 SolarEdge
 @SolarEdgePV
 @SolarEdgePV
 SolarEdgePV
 SolarEdge
 www.solaredge.com/corporate/contact

solaredge

solaredge.com

©SolarEdge Technologies, Ltd.
All rights reserved.
Rv: 02/2022/V01/ROW
Subject to change without notice